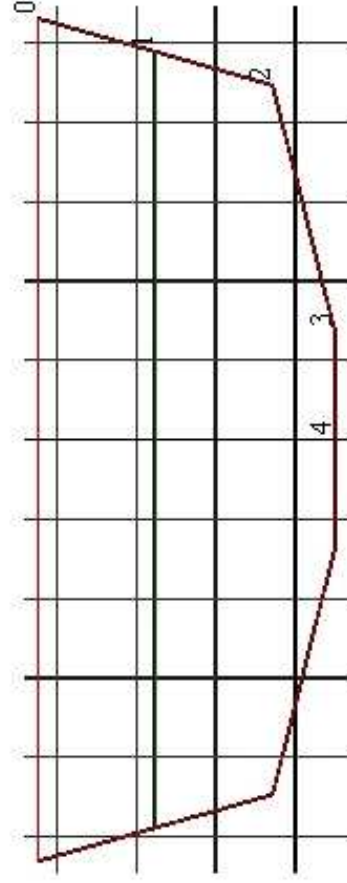
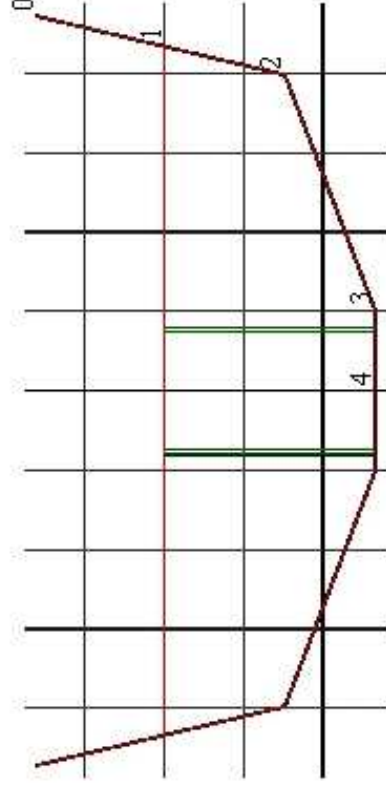


Front transom	X (mm)	Y (mm)
0 Sheer	286	389
1 Seat	248	248
2 Chine	222	155
3 Bottom	61	0
4 Centre	0	0

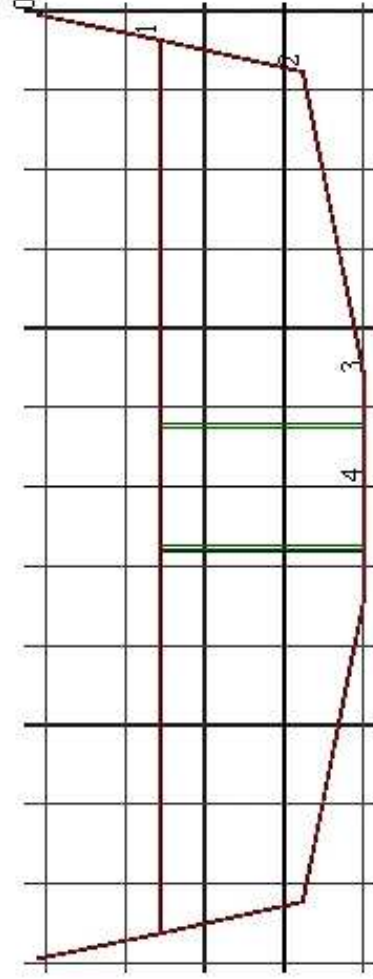


Back transom	X (mm)	Y (mm)
0 Sheer	531	324
1 Seat	489	176
2 Chine	447	28
3 Bottom	135	-51
4 Centre	0	-51

Transoms made from 12mm ply or 2 laminations of 6mm ply  
 Front transom cut over size and beveled to meet planks. Approx angles: Bottom (3 to 4) 125°. Mid plank (2 to 3) 130°. Top plank (0 to 2) 120°  
 Drainage hole for bung drilled in bottom of the back transom

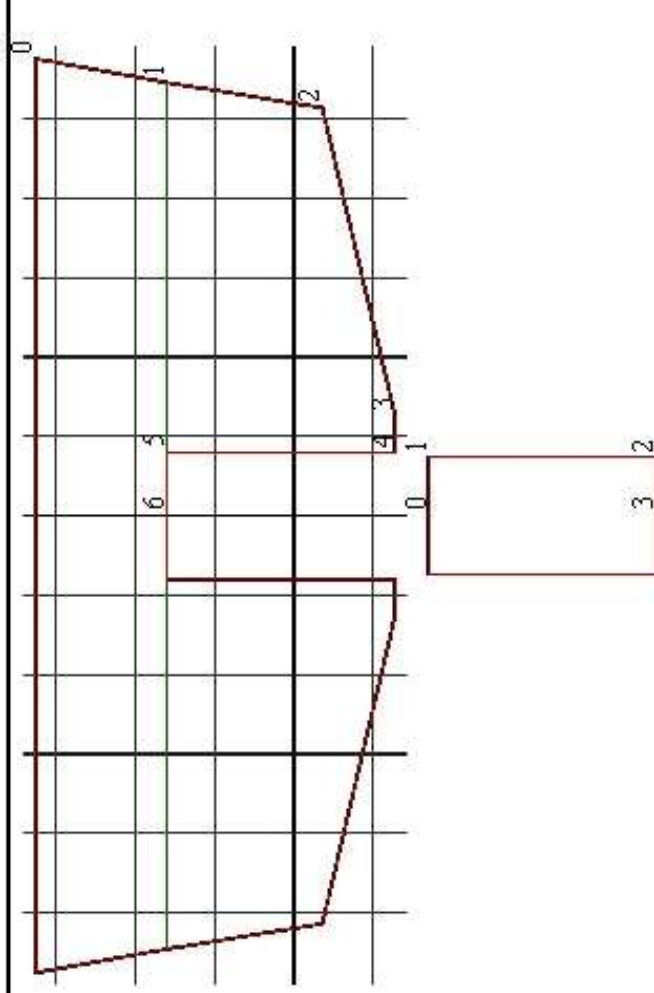


Bulkhead 1	X (mm)	Y (mm)
0 Sheer	472	361
1 Seat	434	200
2 Chine	398	48
3 Bottom	101	-66
4 Centre	0	-66



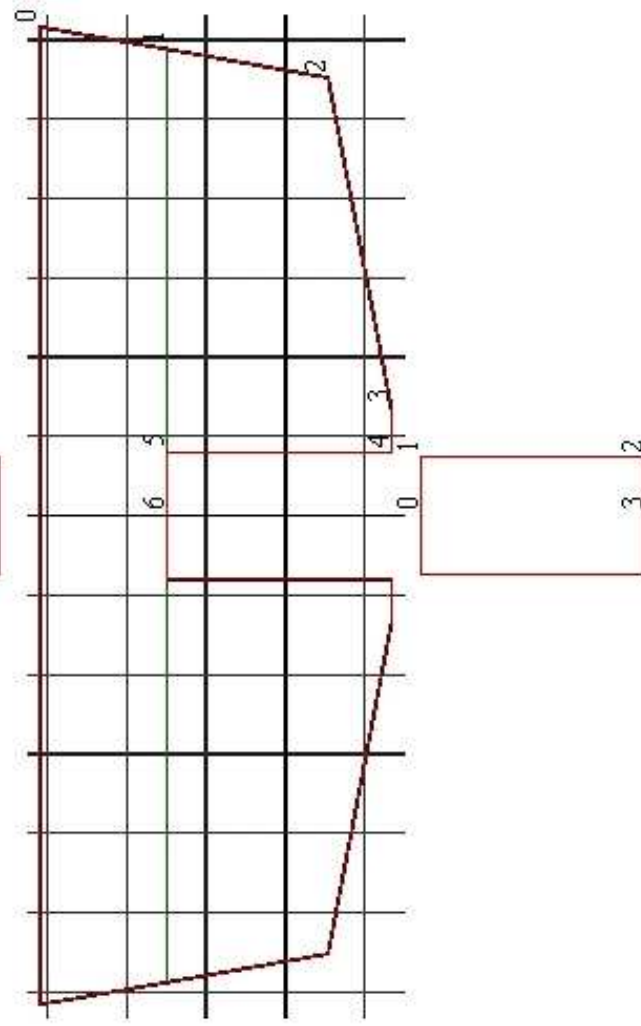
Bulkhead 4	X (mm)	Y (mm)
0 Sheer	595	311
1 Seat	563	156
2 Chine	523	-24
3 Bottom	137	-102
4 Centre	0	-102

Bulkhead from 6mm ply up to seat level.  
 Wood extensions (0 to 2) glued to bulkhead (1 to 2)  
 Drainage hole for bung drilled in bottom of bulkhead. Add additional 6mm ply backing  
 If required, holes for plastic access hatches cut into bulkheads and edges strengthened with ring of 6mm ply



Temp bulkhead 2	X (mm)	Y (mm)
0 Sheer	576	326
1 Seat	546	160
2 Chine	514	-36
3 Bottom	125	-128
4 SeatBottom	80	-128
5 SeatTop	80	160
6 SeatTopCentre	0	160

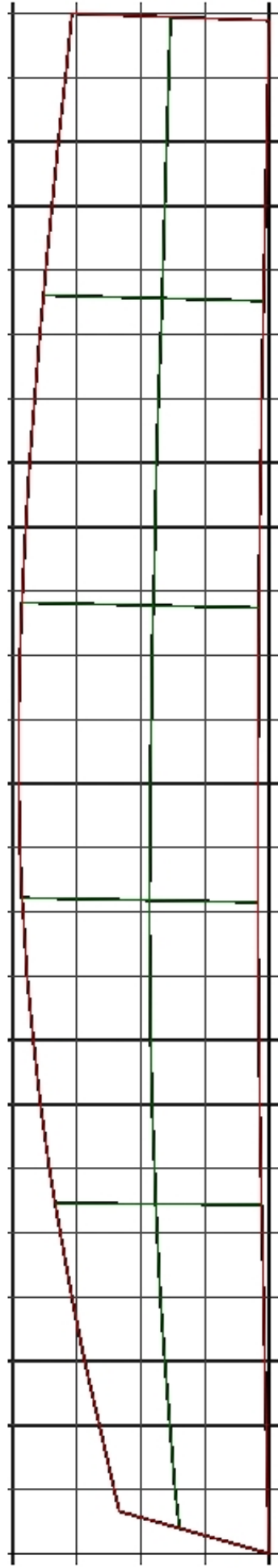
Tank spacer 2	X (mm)	Y (mm)
0 SeatTopCentre	0	160
1 SeatTop	74	160
2 SeatBottom	74	-128
3 SeatBottomCentre	0	-128



Temp bulkhead 3	X (mm)	Y (mm)
0 Sheer	616	310
1 Seat	588	149
2 Chine	552	-54
3 Bottom	135	-134
4 SeatBottom	80	-134
5 SeatTop	80	149
6 SeatTopCentre	0	149

Tank spacer 3	X (mm)	Y (mm)
0 SeatTopCentre	0	149
1 SeatTop	74	149
2 SeatBottom	74	-134
3 SeatBottomCentre	0	-134

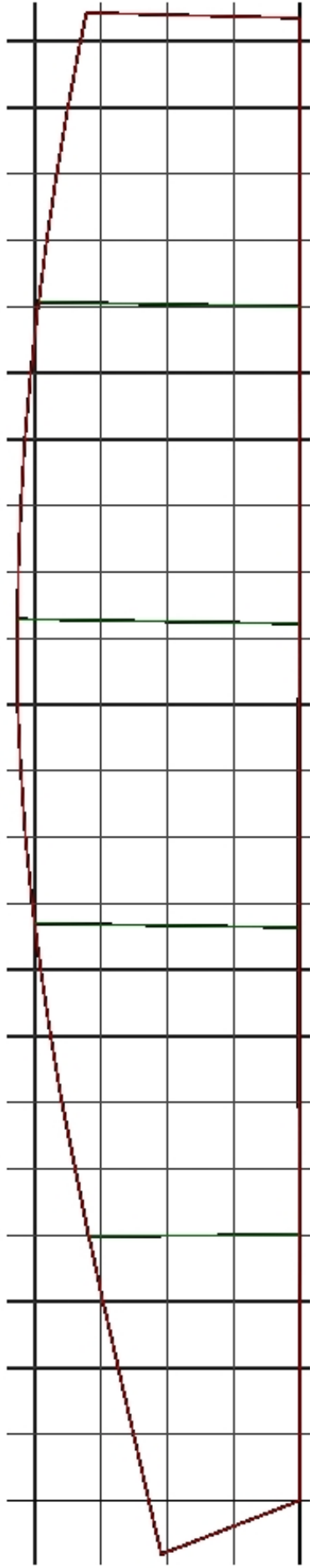
Temporary bulkheads from 9mm ply or similar  
 Cut away temporary bulkhead corners 2,3,4 to avoid gluing bulkhead in place  
 Tank spacers from 6mm plywood  
 Cut holes in tank spacers to allow water to drain and air to circulate



Top	X (mm)	Y (mm)
0 Front	66	234
1	100	242
2	200	265
3	300	288
4	400	308
5	500	326
6 Bulk1	546	334
7	600	343
8	700	357
9	800	368
10	900	378
11	1000	384
12 Bulk2	1022	386
13	1100	389
14	1200	391
15	1300	391
16	1400	389
17 Bulk3	1482	386
18	1500	385
19	1600	380
20	1700	374
21	1800	366
22	1900	358
23 Bulk4	1961	352
24	2000	349
25	2100	339
26	2200	329
27	2300	318
28 Transom	2400	308

Bottom	X (mm)	Y (mm)
0 Front	0	0
1	100	3
2	200	5
3	300	7
4	400	9
5	500	11
6 Bulk1	544	12
7	600	13
8	700	15
9	800	16
10	900	17
11	1000	18
12 Bulk2	1015	18
13	1100	18
14	1200	18
15	1300	17
16	1400	17
17 Bulk3	1474	16
18	1500	16
19	1600	15
20	1700	13
21	1800	12
22	1900	10
23 Bulk4	1952	9
24	2000	8
25	2100	6
26	2200	4
27	2300	2
28 Transom	2389	0

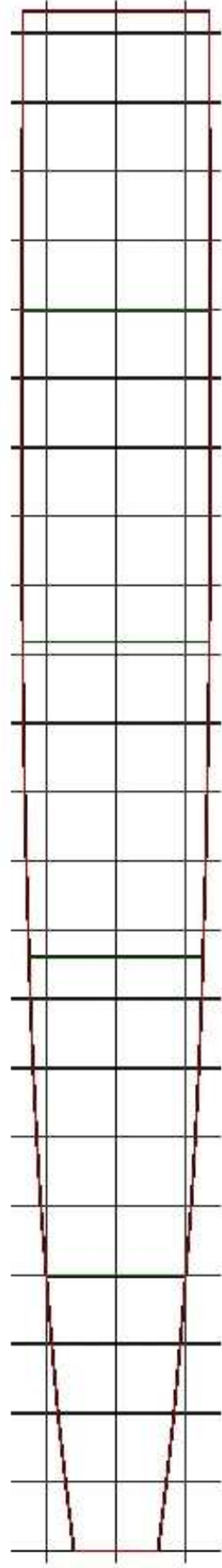
Seat	X (mm)	Y (mm)
0 Front	39	140
1	100	147
2	200	155
3	300	163
4	400	170
5	500	175
6 Bulk1	545	177
7	600	179
8	700	183
9	800	185
10	900	186
11	1000	187
12 Bulk2	1018	187
13	1100	186
14	1200	186
15	1300	184
16	1400	183
17 Bulk3	1477	181
18	1500	180
19	1600	178
20	1700	176
21	1800	173
22	1900	169
23 Bulk4	1956	167
24	2000	166
25	2100	163
26	2200	160
27	2300	157
28 Transom	2395	154



Top	X (mm)	Y (mm)
0 Front	-81	209
1	0	228
2	100	251
3	200	274
4	300	297
5 Bulk1	398	318
6	400	319
7	500	339
8	600	359
9	700	376
10	800	391
11 Bulk2	870	400
12	900	404
13	1000	414
14	1100	421
15	1200	426
16	1300	426
17 Bulk3	1329	426
18	1400	425
19	1500	421
20	1600	415
21	1700	406
22	1800	395
23 Bulk4	1807	394
24	1900	382
25	2000	367
26	2100	350
27	2200	331
28 Transom	2243	322

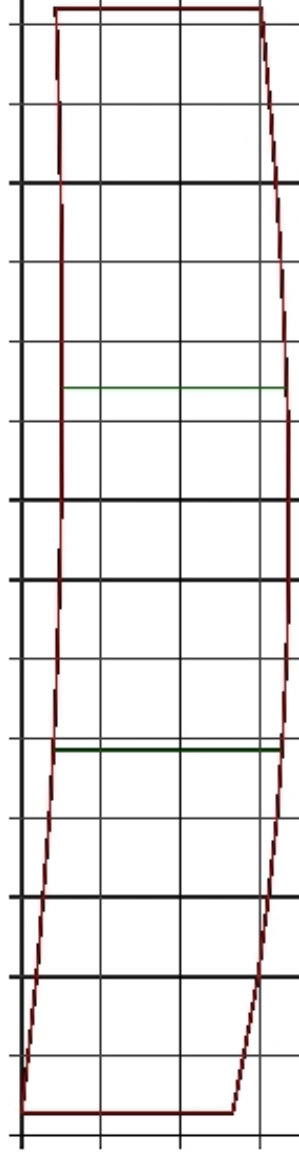
Bottom	X (mm)	Y (mm)
0 Front	0	0
1	100	0
2	200	0
3	300	0
4	400	1
5 Bulk1	401	1
6	500	1
7	600	2
8	700	2
9	800	2
10 Bulk2	864	2
11	900	2
12	1000	2
13	1100	2
14	1200	2
15	1300	1
16 Bulk3	1322	1
17	1400	1
18	1500	1
19	1600	1
20	1700	0
21	1800	0
22 Bulk4	1800	0
23	1900	0
24	2000	0
25	2100	0
26	2200	0
27 Transom	2235	0





Top	X (mm)	Y (mm)
0 Front	0	61
1	100	73
2	200	84
3	300	93
4 Bulk1	399	101
5	400	101
6	500	109
7	600	115
8	700	120
9	800	124
10 Bulk2	861	126
11	900	127
12	1000	130
13	1100	132
14	1200	134
15	1300	135
16 Bulk3	1318	135
17	1400	136
18	1500	137
19	1600	137
20	1700	137
21 Bulk4	1797	137
22	1800	137
23	1900	136
24	2000	136
25	2100	135
26	2200	135
27 Transom	2232	135

Bottom	X (mm)	Y (mm)
0 Front	0	-61
1	100	-73
2	200	-84
3	300	-93
4 Bulk1	399	-101
5	400	-101
6	500	-109
7	600	-115
8	700	-120
9	800	-124
10 Bulk2	861	-126
11	900	-127
12	1000	-130
13	1100	-132
14	1200	-134
15	1300	-135
16 Bulk3	1318	-135
17	1400	-136
18	1500	-137
19	1600	-137
20	1700	-137
21 Bulk4	1797	-137
22	1800	-137
23	1900	-136
24	2000	-136
25	2100	-135
26	2200	-135
27 Transom	2232	-135



Top	X (mm)	Y (mm)
0 Bulk1	28	200
1	100	192
2	200	181
3	300	173
4	400	165
5 Bulk2	485	160
6	500	159
7	600	155
8	700	152
9	800	150
10	900	149
11 Bulk3	942	149
12	1000	149
13	1100	149
14	1200	151
15	1300	153
16	1400	156
17 Bulk4	1420	157

Bottom	X (mm)	Y (mm)
0 Bulk1	28	-66
1	100	-80
2	200	-98
3	300	-111
4	400	-122
5 Bulk2	485	-128
6	500	-129
7	600	-134
8	700	-137
9	800	-137
10	900	-136
11 Bulk3	942	-134
12	1000	-132
13	1100	-127
14	1200	-121
15	1300	-113
16	1400	-104
17 Bulk4	1420	-102